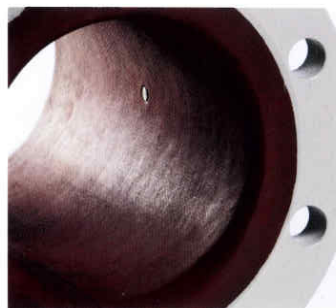


Liner: Linatex

Linatex, Natural Soft Rubber



Linatex is made of natural soft rubber and has an excellent performance in abrasive media.

Linatex has an excellent performance in abrasive media.

Thanks to its high resistance to wear the Linatex liner is long lasting and economically attractive, especially in heavy slurry applications.

About Linatex

Linatex is based on 95% natural soft rubber. Raw natural rubber, when vulcanized, exhibits an inherent strength, resilience and toughness that combine to provide an excellent abrasion-resistant performance, especially in heavy slurry applications.

Its phenomenal resilience, exceptional tear resistance, all-round toughness and the unique cross linking of its molecular structure, ensure that Linatex is well accepted worldwide within the mining industry.

The Siemens Linatex liner is a hand lined and bonded liner with a stainless steel inner tube.

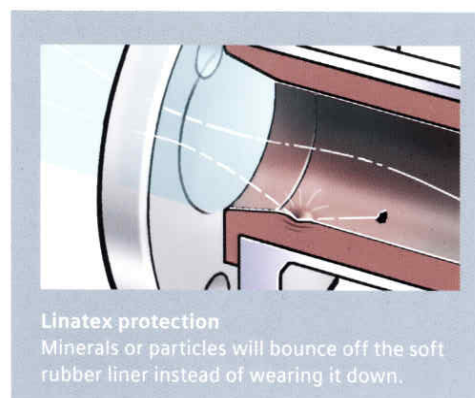
Linatex facts and features

- Excellent abrasion resistance particularly to sand, slurries and particles because the particles simply bounce off the soft rubber instead of causing damage
- The only liner which tolerates low temperature applications down to -40°C (-40°F)
- Linatex can be adversely affected by oil and solvents.

Application	Capability
Drinking Water	
Wastewater	
Abrasive Liquids	✓✓✓
Chemicals	
Food & Beverage	
Pulp & Paper	

Acid Resistance	Capability
Diluted	
Concentrated	

Wear Resistance	Performance
Abrasion	✓✓✓



Products	Nominal size	Medium temperature range	Operating pressure	Drinking water or hygienic approvals
MAG 3100	DN 25...DN 600 (1"...24")	-40/+70°C (-40/+158°F)	0.01-40 bar (0.15-580 psi)	
911/E *	DN 15...DN 1000 (1/2"...40")	-40/+70°C (-40/+158°F)	0.01-40 bar (0.15-580 psi)	

* Soft rubber VWE/R61 (liner sample in selection guide is Linatex from MAG 3100)