



SIEMENS

Process Instrumentation

Remote monitoring made easy

SITRANS RD500 monitors instrumentation anytime, anywhere via the web – ready to go out of the box.

[siemens.com/SITRANSRD500](https://www.siemens.com/SITRANSRD500)

Your instruments made smarter with SITRANS RD500 remote monitoring solution from Siemens.

Ideal for remote monitoring applications including inventory levels, regulatory monitoring, remote maintenance alarming, or process and environmental monitoring, SITRANS RD500 remote data manager helps you stay connected and informed. SITRANS RD500 provides remote monitoring through datalogging, web access, and alarming for instrumentation and other devices. Bringing smart functionality to your instruments, SITRANS RD500 is remote monitoring made easy.

Simple web access

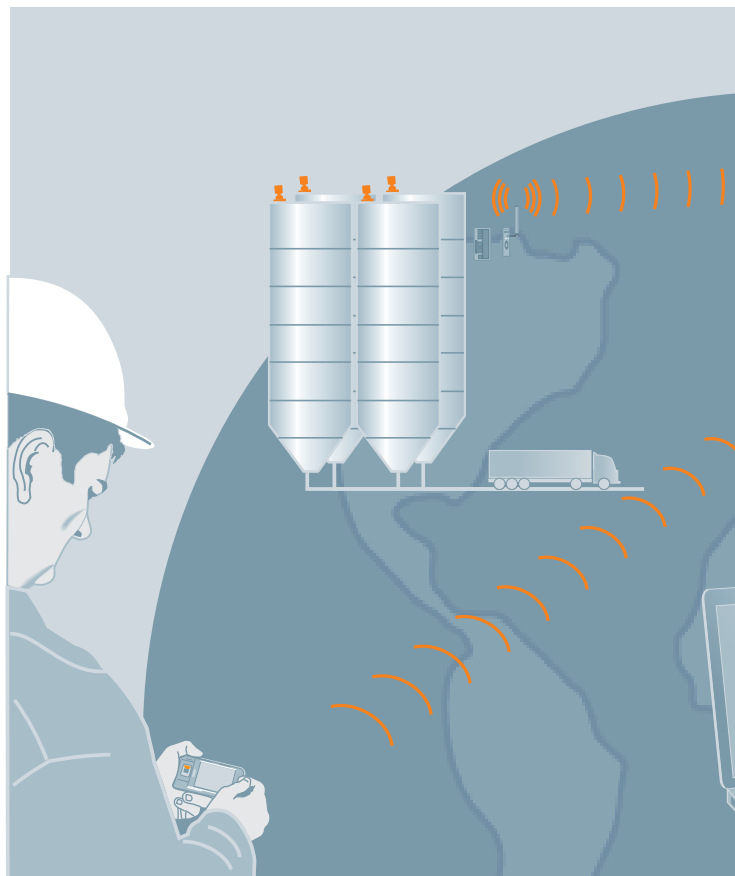
Just type an IP address in your web browser and immediately access data from remotely installed instrumentation. SITRANS RD500 collects and sends sensor data to logistics systems, giving you the up-to-date, timely, and accurate information you need to make decisions. It relays data from remote instrumentation to your desktop, no matter where you or your instruments are.

Ideal instrumentation accessory

Have a SITRANS LR560? SITRANS P500? SITRANS FUS1010? Keep track of your process instruments and other devices remotely – up to 128 conventional IO instruments and addressing for 247 Modbus devices. SITRANS RD500 is a scalable solution to which you can add any of the IO modules to connect more instruments over time.

SITRANS RD500 provides:

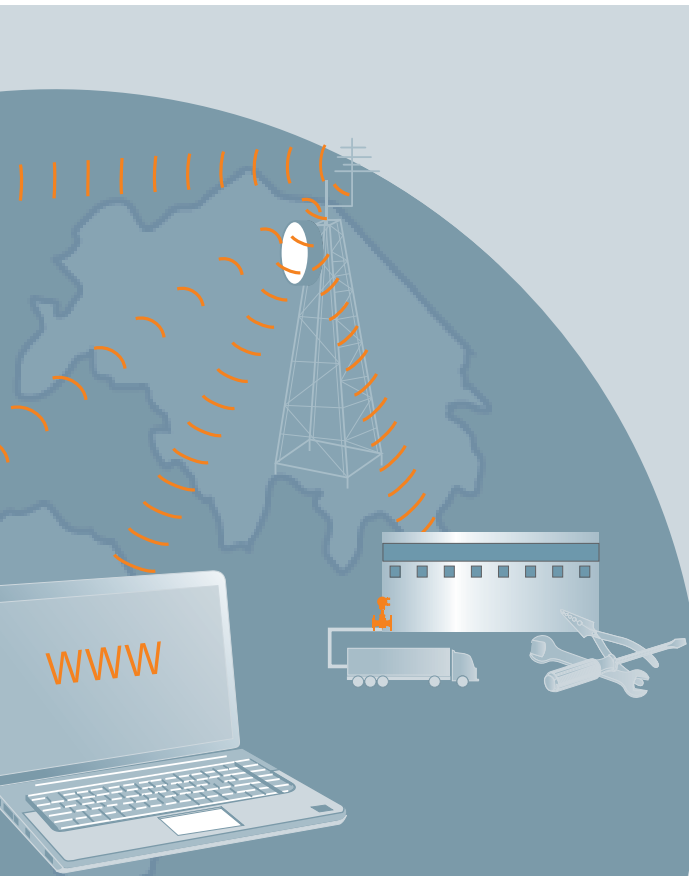
- Remote configuration of SITRANS RD500
- Remote viewing of instrumentation data
- Remote datalogging
- Remote event alarming
- Reporting and messaging



With SITRANS RD500, monitor inventory levels, process, environmental, and remote instrumentation, including flow, level, pressure, temperature measurement, and weighing.



*Wherever your job takes you,
Siemens is there.*



Easy setup and flexible communications options

Web application supports out-of-the-box operation, as there's no programming or engineering required. No need for any additional software, using a standard web browser you can both access data and configure the SITRANS RD500. Flexible communication options from remote sites include Ethernet, Wireless (cellular), and PSTN. As well, with Modbus RTU instruments, you have the added advantage of remotely configuring your instruments.

High capacity and easy-to-use datalogger

SITRANS RD500 has the capacity to store years of data, as it supports up to 2 gigabytes of removable compact flash memory. The reporting uses standard HTML that you can access automatically via email or FTP transfer, or on-demand via the integrated web server. The stored data files are also remotely accessible by FTP server. The FTP Push function sends data files to any remote FTP server for integration into your logistics systems.

maintenance applications, and get web access to most types of field instrumen-

More information:

www.siemens.com/SITRANSRD500

Siemens AG
Industry Sector
Sensors and Communication
76181 KARLSRUHE
GERMANY

www.siemens.com/sensorsystems

Subject to change without prior notice
Order No.: 7ML1996-5LA03
Printed in Canada
© Siemens AG 2011

The information provided in this flyer contains merely general descriptions or characteristics of performance which in case of actual use do not always apply as described or which may change as a result of further development of the products. An obligation to provide the respective characteristics shall only exist if expressly agreed in the terms of contract.

All product designations may be trademarks or product names of Siemens AG or supplier companies whose use by third parties for their own purposes could violate the rights of the owners.