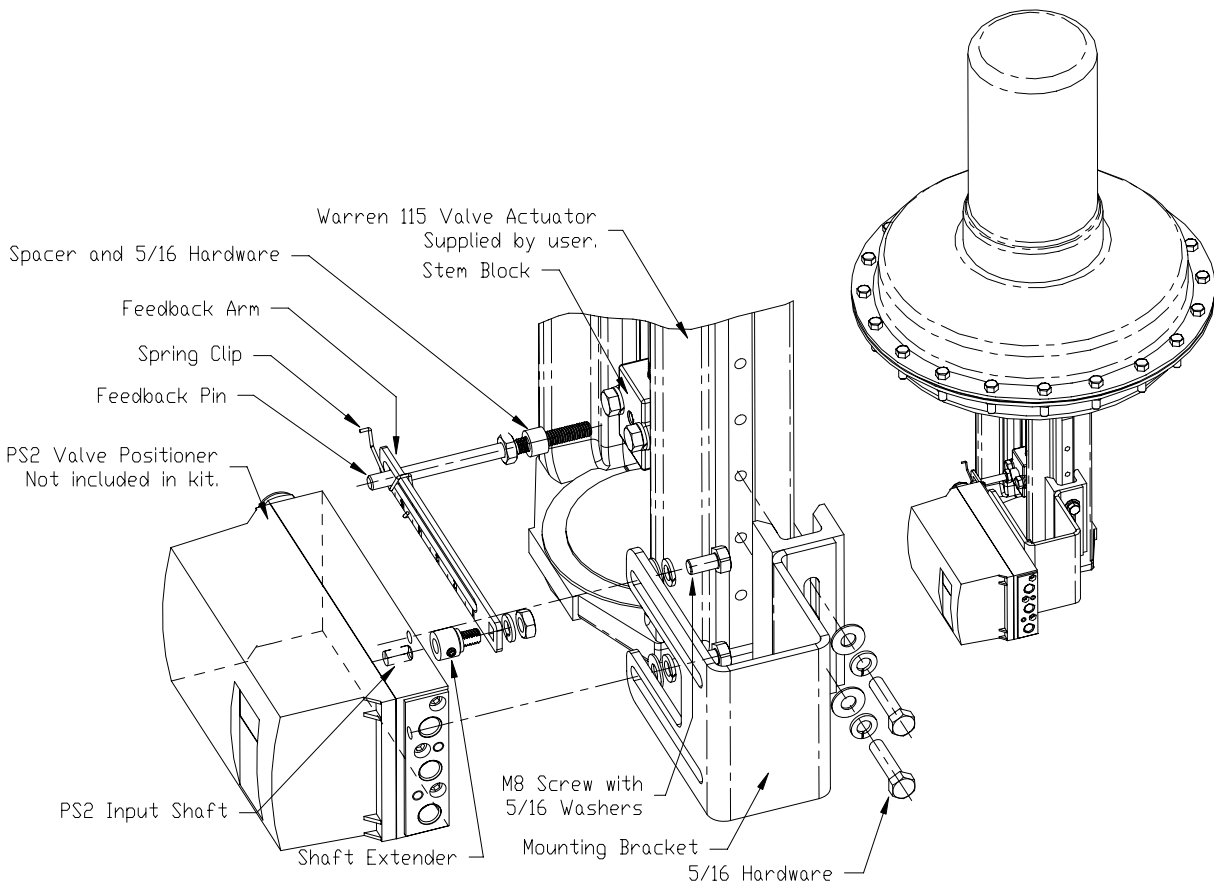


Kit PN TGX:16152-555

15900-738
Rev 1
November 2006

**SIPART® PS2 MOUNTING BRACKET FOR
WARREN 115 REVERSE ACTING VALVE ACTUATOR**

This publication provides installation instructions to mount a Siemens SIPART PS2 valve positioner to a Warren 115 valve actuator and to install the mechanical feedback linkage.



KIT PARTS, TGX:16152-555

Description	Quantity
Mounting Kit, Warren 115 (PN TGX:16152-554)	1
Feedback Pin, Stainless Steel	1
Shaft Extender, Lockwasher, and Nut	1 each
Spring Clip	1

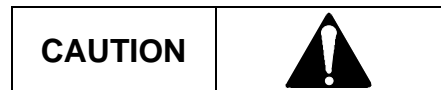
KIT PARTS, TGX:16152-554

Description	Quantity
Mounting Bracket	1
Standoff, .5" O.D. x .38" Long	1
Feedback Lever, 1" to 6" Long	1
5/16-18 x 1.38" Long Hex Hd Screw	2
5/16 Medium Lockwasher	4
5/16 Flat Washer	4
M8 x 16 Hex Hd Screw DIN933-A2	2

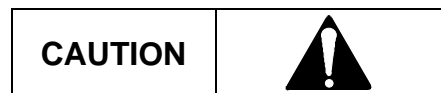
INSTALLATION

Refer to the following procedure and to the positioner and actuator installation instructions while performing the installation. The current revision of the positioner instruction is available at the Siemens Internet site. See Contact Information later in this Instruction for the URL.

Before beginning the installation, note the following cautions.



Do not apply supply pressure to the actuator or the valve positioner during the installation process. Applying supply pressure before the equipment is properly mounted could cause unexpected movement that could lead to personal injury or equipment damage.



Do not exceed the maximum actuator and valve positioner air pressures stated in the manufacturer's literature. Exceeding these ratings could cause personal injury or equipment damage.

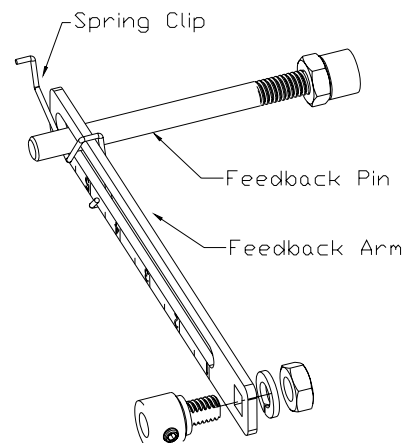
1. Open kit(s) and check the contents against the Kit Parts lists above. Refer to the drawing on page 1 for part identification.
2. Get the feedback arm, shaft extender, and shaft extender mounting hardware and fasten the arm to the shaft extender.
3. Fasten the shaft extender to the PS2 input shaft. Tighten the setscrew securely.
4. Get the mounting bracket, two M8 hex screws, and two 5/16 lockwashers and flat washers; see the drawing on page 1. Fasten the bracket to the PS2.
5. Get the feedback pin and thread it into the stem block as far as possible.
6. Determine needed feedback pin length by holding the PS2/mounting bracket assembly against the actuator, as shown on page 1, with the feedback arm against the pin. The pin must be long enough to extend beyond the feedback arm and spring clip by at least 1/8" but must not contact the body of the PS2. Mark the pin at the desired length with a piece of tape.
7. Remove the feedback pin and cut it to the needed length. Remove any burrs. *Do not scar the pin where it will ride in the feedback arm slot and spring clip.*
8. Thread a 5/16 nut onto the pin and place the lockwasher and spacer on the pin. Thread the pin into the stem block as far as possible and then tighten the locking nut against the spacer.

9. Mount the PS2/mounting bracket assembly to the actuator.
 - 1) Get two 5/16 hex head screws, flat washers and lockwashers.
 - 2) Locate a pair of holes in the actuator (see the figure on page 1) as close as possible to mid-stroke.
 - 3) Fasten the PS2/mounting bracket assembly to the actuator. Be sure the feedback pin extends through the slot in the feedback arm. Adjust the location of the assembly so that, with the actuator stem at mid-stroke, the feedback arm is approximately perpendicular to the actuator stem. Tighten the mounting hardware.

Note

For improved linearity, position the PS2 such that the feedback arm swings through a total angle of 30° or less. When configuring the PS2, set the Gear Switch (i.e. Transmission Ratio Selector) to 33°.

10. Install the spring clip (retaining clip) on the feedback arm as shown at right.
11. Tighten all hardware.
12. Read the “Cautions” on page 2 and then apply the appropriate air pressures to fully stroke the valve. Inspect the positioner/actuator assembly to ensure that:
 - The feedback linkage does not prevent the valve from fully stroking.
 - The feedback pin moves freely within the feedback arm for the entire valve stroke.
 - All linkage hardware is secure.
13. Once the feedback arm moves freely for the entire stroke, make necessary electrical and pneumatic connections and then proceed to the PS2 setup instruction found within the PS2 manual.



CONTACT INFORMATION

For Product Support in the U.S.A.

Technical Support	
Telephone	1 800 333 7421
E-mail	TechSupport.sea@siemens.com
Hours of Operation	8 a.m. to 4:45 p.m. eastern time, Monday through Friday (except holidays)
Technical Publications in PDF	http://www.sea.siemens.com/ia ; under Customer Support Process Instrumentation, click on Documentation & Support Links
Public Internet Site	http://www.sea.siemens.com/ia
Repair Service	1 215 646 7400 extension 3187

For Product Support Outside of the U.S.A.

Visit the Siemens public Internet site (see the above table for the URL), locate “Customer Support Process Instrumentation,” and click on the Contact Tech Support link to access the Global Support link.

All product designations may be trademarks or product names of Siemens Energy & Automation, Inc. or other supplier companies whose use by third parties for their own purposes could violate the rights of the owners.

Siemens Energy & Automation, Inc. assumes no liability for errors or omissions in this document or for the application and use of information in this document. The information herein is subject to change without notice.

Procedures in this document have been reviewed for compliance with applicable approval agency requirements and are considered sound practice. Neither Siemens Energy & Automation, Inc. nor these agencies are responsible for repairs made by the user.