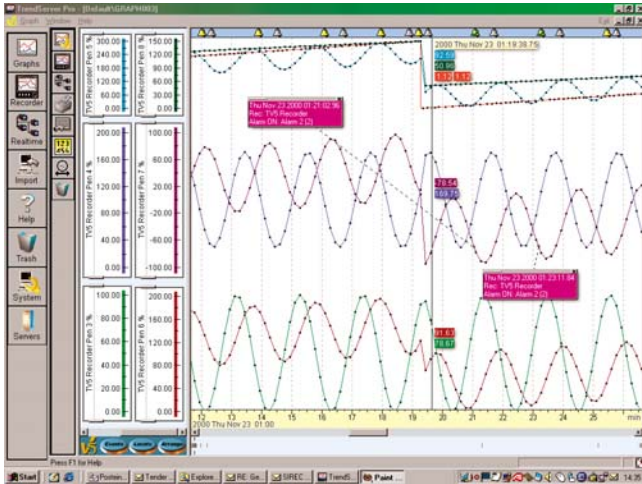


SIREC D display recorder

SIREC D application software

Application



SIREC D-Viewer and SIREC D-Manager

The SIREC D-Viewer software is included in the scope of delivery of the recorder. It permits the graphical or numerical display and printout of measured values and data.

The SIREC D-Manager software package permits PC-based configuration and simulation of the recorder as well as the archiving, graphic display, printing and exporting of data. Using the integral protected database and integral e-mail functionality, recorded data and configurations are easy to send to other users.

SIREC D-Server

SIREC D-Server is a network solution for data display and archiving as well as for communication with up to 256 recorders. An RS-485 network or also the Ethernet TCP/IP option of the recorder is used for this, and permits direct interfacing to existing LANs. The standard package provides archiving, e-mail, graphics, printing and export functions

An integral OPC function permits export to software from other vendors in real-time mode.

SIREC D-Designer

The SIREC D-Designer permits the user to draft own graphic pages which are subsequently output on the recorder display. Any combination of display elements can be used such as trends, digital displays, bargraphs, bitmaps, digitized displays and plant displays. Various aspects of these elements can be modified if required to obtain a truly individual display.

The SIREC D-Designer software is compatible with both SIREC DM and SIREC DH recorders. Complete graphic pages can be loaded via diskette/PC card into any number of recorders. In this manner it is particularly easy to achieve consistent and standardized display of the process data.

Function

Comparison of functions of SIREC D Viewer, Manager and Server

Functions	SIREC D Viewer	SIREC D Manager	SIREC D Server
Importing of data from diskette	X	X	X
Graphic display of data	X	X	X
Upgrades available from Internet	X	X	X
Printout of all graphic data	X	X	X
Access to recorder via Internet browser	X	X	X
Printout of all configuration data		X	X
PC-based configuration of graphic recorders		X	X
Configuration of fuzzy logging function		X	X
Configuration of event system		X	X
Archiving of data in protected databases		X	X
Exporting of measured data in CSV format		X	X
Exporting of online measured data with OPC			X
Communication with up to 256 recorders via RS 485			X
Communication with recorders via Ethernet TCP/IP			X
Access to recorder data from a LAN			X
FTP and real-time Ethernet communication			X
User administration and password protection			X
Configuration of recorders via Ethernet			X
Audit trail manager			X

Technical specifications

System requirements	SIREC D-Viewer/Manager	SIREC D-Server	SIREC Designer
Processor	Pentium 200 MHz or higher	Pentium 350 MHz or higher	Pentium 200 MHz or higher
Main memory	32 MB RAM (64 MB recommended)	64 MB RAM	32 MB RAM (64 MB recommended)
Vacant hard disk	10 MB	10 MB	10 MB
Operating system	Windows 95, 98, 2000, NT Version 4.0, Service Pack 3 or higher	Windows 95, 98, 2000, NT Version 4.0, Service Pack 3 or higher	Windows 95, 98, 2000, NT Version 4.0, Service Pack 3 or higher
3.5" diskette drive	X	X	X
CD-ROM drive	X	X	X
Monitor resolution	1024 x 768 or better, high color (16 bit)	1024 x 768 or better, high color (16 bit)	16-bit color graphics (24 bit recommended)
Mouse	X	X	X
Other		Installed TCP/IP protocol	

Selection and Ordering Data

Order No.

SIREC D software

Evaluation software for SIREC DS/DM/DH incl. enabling for SIREC D-Viewer and manual for the software in German, English, French
Software is included in delivery of recorder

7ND4 800-8AA

Options / enabling of SIREC D software
Code No. of software required

Enabling of SIREC D-Manager

7ND4 800-8BA

Enabling of SIREC D-Server

7ND4 800-8CA

Enabling of SIREC D-Designer

7ND4 800-8DA