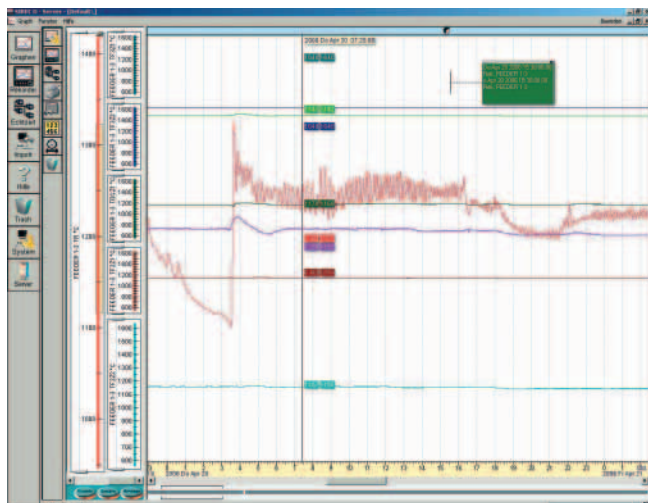


Overview



SIREC D-Viewer and SIREC D-Manager

The SIREC D-Viewer software is included in the scope of delivery of the recorder. It permits the graphical or numerical display and printout of measured values and data.

The SIREC D-Manager software package permits PC-based configuration and simulation of the recorder as well as the archiving, graphic display, printing and exporting of data with CSV format.

SIREC D-Server

SIREC D-Server is a network solution for data display and archiving as well as for communication with up to 256 recorders. An RS485 network or also the Ethernet TCP/IP option of the recorder is used for this, and permits direct interfacing to existing LANs. The standard package provides archiving, e-mail, graphics, printing and export functions

An integral OPC function permits export to software from other vendors in real-time mode.

Database Tool

This software application works with SIREC D-Manager and SIREC D-Server to provide safe administration of data with tools to archive, sort, move, copy and delete the data stored in local and remote databases.

The Database Tool software is supplied with SIREC D-Server.

SIREC D-Designer (only for SIREC D300 and SIREC D400)

The SIREC D-Designer permits the user to draft own graphic pages which are subsequently output on the recorder display. Any combination of display elements can be used such as trends, digital displays, bargraphs, bitmaps, digitized displays and plant displays. Various aspects of these elements can be modified if required to obtain a truly individual display.

The SIREC D-Designer software is compatible with both SIREC D300 and SIREC D400 recorders. Complete graphic pages can be loaded via diskette/PC card into any number of recorders. In this manner it is particularly easy to achieve consistent and standardized display of the process data.

Function

Comparison of functions of SIREC D-Viewer, Manager and Server

Functions	SIREC D-Viewer	SIREC D-Manager	SIREC D-Server
Importing of data from diskette	X	X	X
Graphic display of data	X	X	X
Upgrades available from Internet	X	X	X
Printout of all graphic data	X	X	X
Printout of all configuration data		X	X
PC-based configuration of graphic recorders		X	X
Configuration of fuzzy logging function		X	X
Configuration of event system		X	X
Archiving of data in protected databases		X	X
Exporting of measured data in CSV format		X	X
Exporting of online measured data with OPC			X
Communication with up to 256 recorders via RS485			X
Communication with recorders via Ethernet TCP/IP			X
Access to recorder data from a LAN			X
FTP and real-time Ethernet communication			X
User administration and password protection			X
Configuration of recorders via Ethernet			X
Audit trail manager			X

SIREC D Display Recorder

SIREC D application software

Technical specifications

System requirements	SIREC D-Viewer, SIREC D-Manager, SIREC D-Designer	SIREC D-Server
Processor	Pentium 1 GHz or higher	Pentium 1 GHz or higher
Main memory	512 MByte RAM (min. 512 MByte recommended)	512 MByte RAM (min. 512 MByte recommended)
Free hard disk space	50 MByte	2 GByte
Operating system	Microsoft Windows 2000, XP	Microsoft Windows 2000, XP
Monitor screen resolution	1024 x 768 (recommended minimum), high colour (16 bit), 24 bit recommended (SIREC D-Designer only)	1024 x 768 (recommended minimum), high colour (TCP/IP installed)
Flash card reader or USB port	X	X
CD-ROM drive	X	X
Mouse	X	X
OPC server		OPC 2.0 compatible

Selection and Ordering Data

Order No.

SIREC D software

Evaluation software for SIREC D200/D300/D400 incl. enabling for SIREC D-Viewer and manual for the software in German, English, French
Software is included in delivery of recorder

7ND4 800-8AA

Options/enabling of SIREC D software

Code No. of software required

Enabling of SIREC D-Manager

7ND4 800-8BA

Enabling of SIREC D-Server

7ND4 800-8CA

Enabling of SIREC D-Designer (only for SIREC D300 and SIREC D400)

7ND4 801-8DA

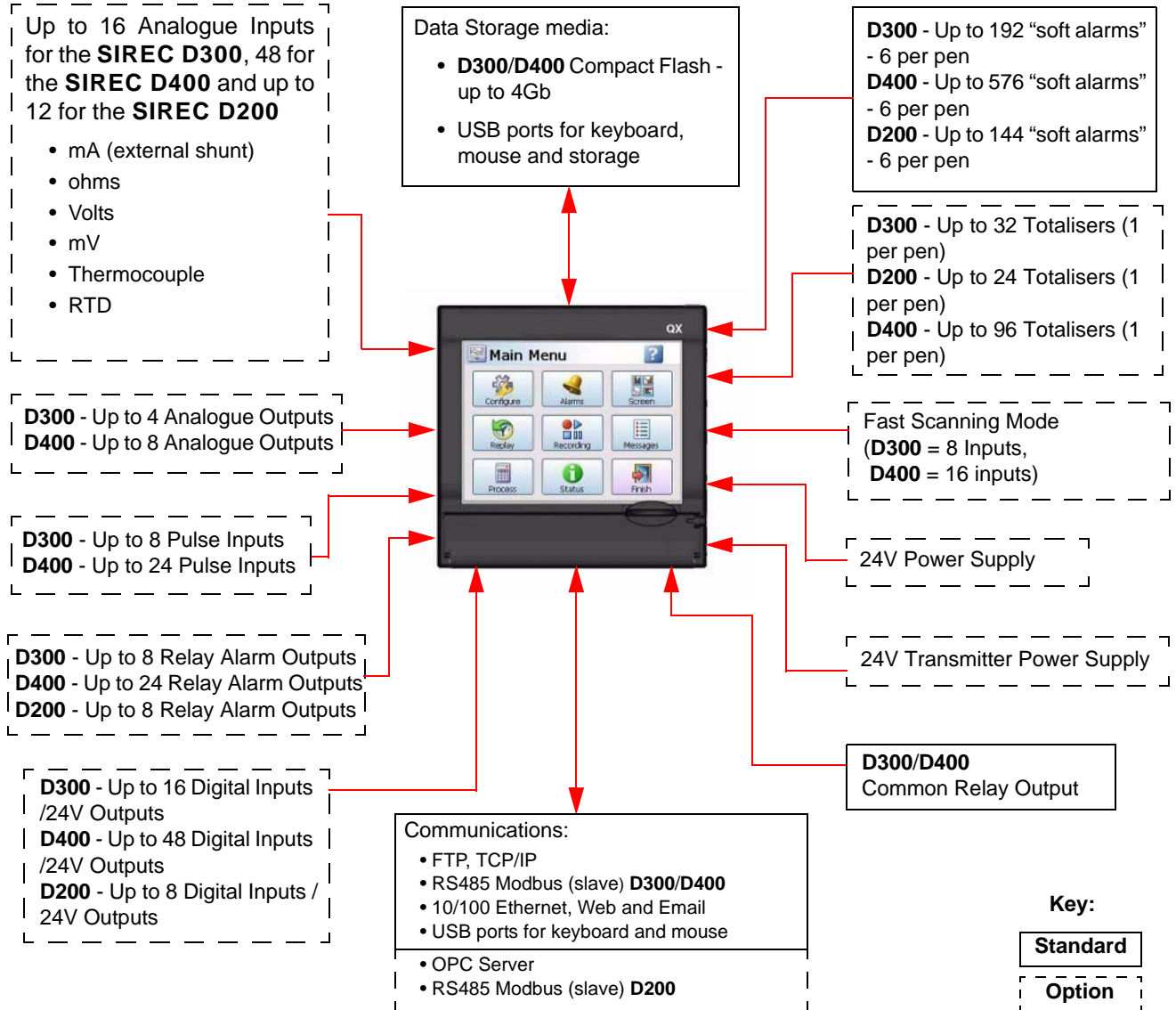
Upgrading of SIREC D-Manager to SIREC D-Server

7ND4 800-8EA



Section 3: Overview

Functions and Features



Crystal Clear Display

- **SIREC D300** has a 5.5” Digital Colour LCD (TFT), QVGA Resolution (320 x 240 pixels)
- **SIREC D400** has a 12.1” Digital Colour LCD (TFT), SVGA Resolution (800 x 600 pixels)
- **SIREC D200** has a 5” Digital Colour LCD (TFT), QVGA Resolution (320 x 240 pixels)
- Clear and intuitive operation, Industrial rugged Touch Screen with rapid navigation
- Industrial rugged Touch Screen with rapid navigation
- Custom build screens in the recorder or using Screen Designer (not **SIREC D200**)

Comprehensive Connectivity

- 10/100 Ethernet (DHCP), Web, OPC Server and E-mail
- FTP and TCP/IP
- RS485 Modbus Protocol (A Comms option card and expansion card are required for the **SIREC D200** recorder).
- USB ports for keyboard, mouse and printer (Rear port is an option for the **SIREC D200**).

Data Storage

- On-board non-volatile Flash memory - up to 2GB for **SIREC D300** and the **SIREC D400**, - up to 400MB for **SIREC D200**.
- Removable Compact Flash and USB storage ([See “Storage Media Format” on page 120.](#)) for formatting information of Compact Flash cards and USB keys). Compact Flash not available for the **SIREC D200**.
- No moving parts - all solid state flash memory

Security Stringent - Total Data integrity

- Password Protection - 21CFR Part 11
- ESS - Extended Security System

Plus..

- Health Watch for preventative maintenance
- Remote Access - Advanced Software Data Analysis at your PC
- Independent Chart and Logging speeds
- Global Language Support
- Rapid review and replay of data at recorder
- Approvals - CE, CSA, UL. **SIREC D300** and **SIREC D400** also have FM approval.
- NEMA 4X / IP66 option.
- Up to 50Hz (20 msec) Logging, 10Hz (100mS for **SIREC D200**).
- Up to 16 Analogue Inputs for the **SIREC D300**
- Up to 48 Analogue Inputs for the **SIREC D400**
- Up to 12 Analogue Inputs for the **SIREC D200**
- Remote Viewer via the recorder web page
- Events
- Batch
- Print Support
- Counters