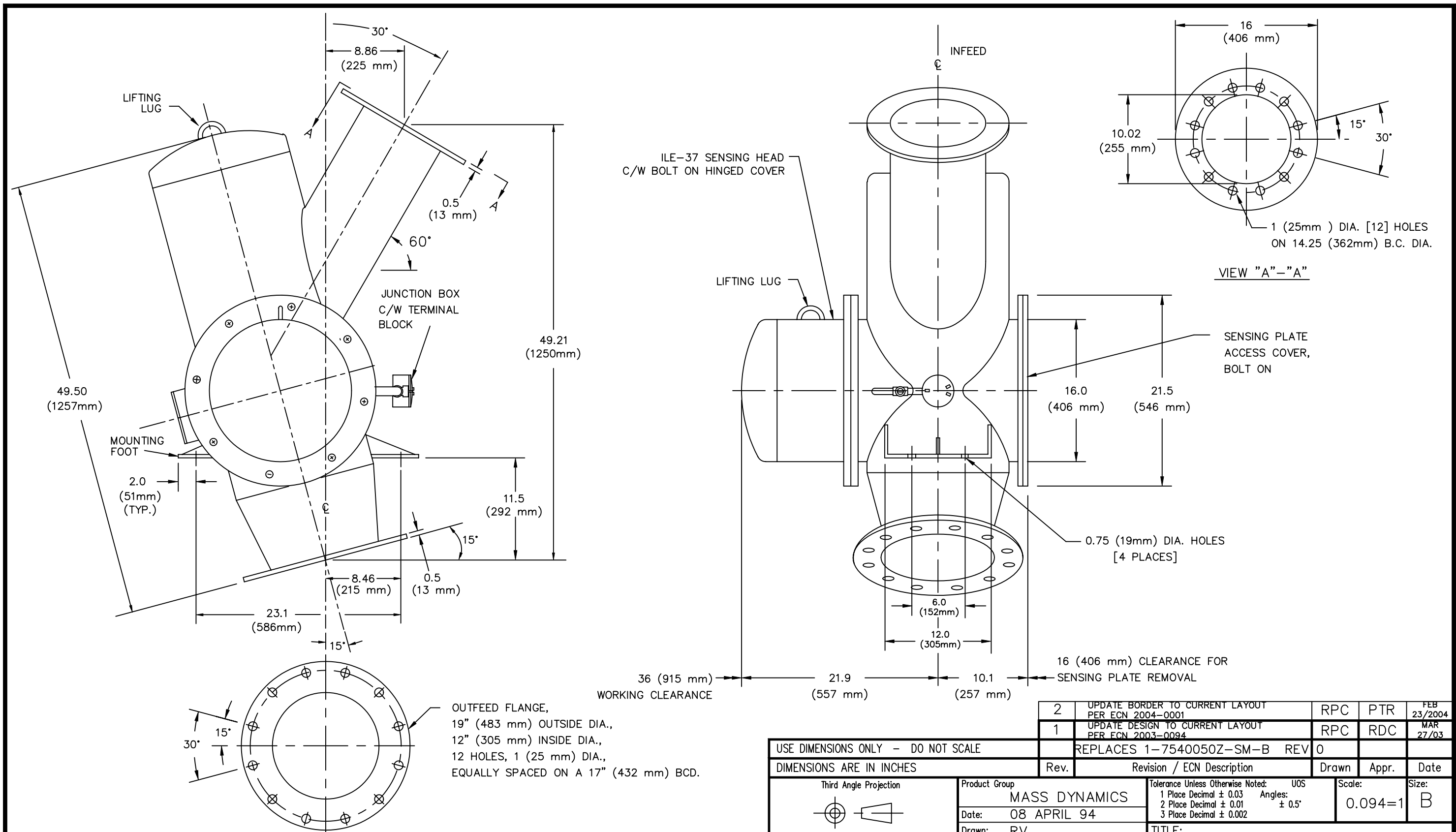


I A I B I C I D I E I F I G I H I I J I



- NOTE:**
- 1). THE FLOWMETER MUST BE INSTALLED TO WITHIN $\pm 1^\circ$ OF THE HORIZONTAL PLANE.
 - 2). THE FLOWMETER IS BUILT TO NFPA CODE 8503 REQUIREMENTS.
 - 3). FOR FURTHER INFORMATION REFER TO THE WIRING DIAGRAM, THE COAL SCALE INSTRUCTION MANUAL OR CONTACT THE NEAREST SIEMENS MILLTRONICS REPRESENTATIVE.

2	UPDATE BORDER TO CURRENT LAYOUT PER ECN 2004-0001	RPC	PTR	FEB 23/2004
1	UPDATE DESIGN TO CURRENT LAYOUT PER ECN 2003-0094	RPC	RDC	MAR 27/03

USE DIMENSIONS ONLY - DO NOT SCALE				
DIMENSIONS ARE IN INCHES				
Rev.	Revision / ECN Description	Drawn	Appr.	Date
Third Angle Projection 		Product Group MASS DYNAMICS Date: 08 APRIL 94 Drawn: RV Checked: Approved: RDC Location: PETERBOROUGH SIEMENS MILLTRONICS PROCESS INSTRUMENTS INC. Peterborough, Ontario, Canada File No. 2365040502	Tolerance Unless Otherwise Noted: UOS 1 Place Decimal ± 0.03 2 Place Decimal ± 0.01 3 Place Decimal ± 0.002 Angles: $\pm 0.5^\circ$	Scale: 0.094=1 Size: B TITLE: 10" (254mm) COAL SCALE CUSTOMER OUTLINE DRAWING DRAWING No: 23650405 Rev. 2
For Public Release		Plot at: 1=1	Sheet 1 of 1	