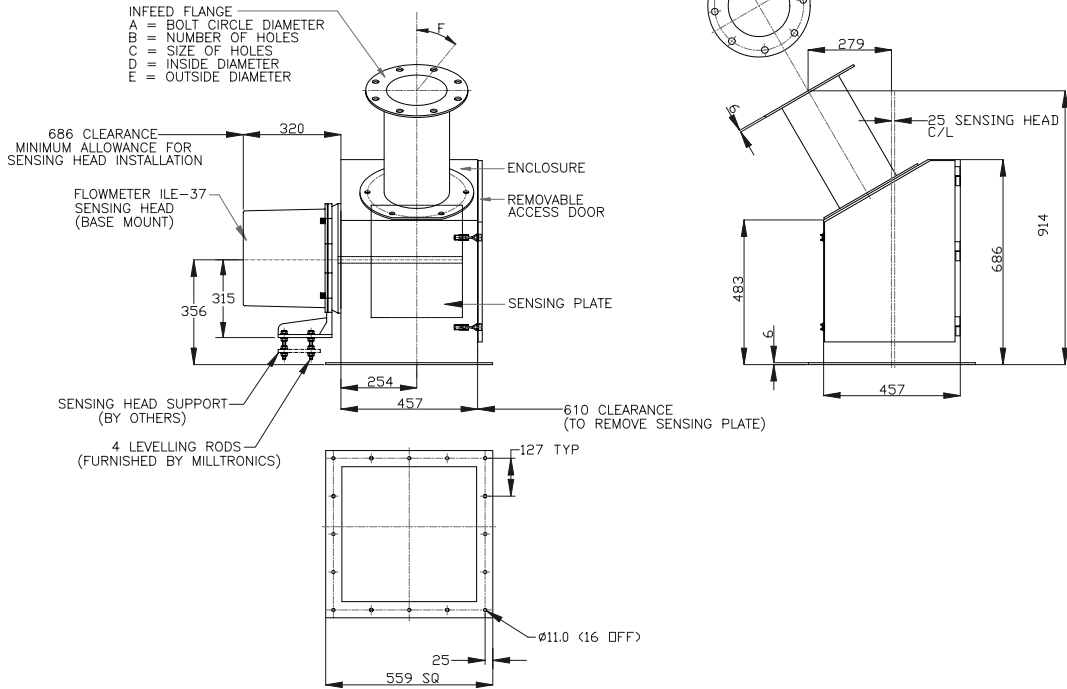


SYSTEM SPECIFICATION	
SENSING HEAD PN.	
FLOW GUIDE PN.	
SENSING PLATE PN.	
CAL WEIGHT PART No.	
SERIAL NUMBER.	
ENGINEERED BY.	

E-40 FLOWMETER INLET FLANGE DETAIL						
SIZE	A	B	C	D	E	F
4"	191	8	19	102	229	22.5°
6"	241	8	22	152	279	22.5°
8"	298	8	22	203	343	22.5°
10"	362	12	25	254	406	15°



NOTES:  
 CONSTRUCTION – MILD STEEL OR STAINLESS STEEL.  
 FLOWMETER SUPPORT TO BE RIGID & INDEPENDENT OF ENCLOSURE.  
 ANY MODIFICATION OR CHANGE SHOULD BE APPROVED BY MILLTRONICS.  
 SEE DATA SHEET FOR MATERIAL SPECIFICATION  
 SEE INSTRUCTION MANUAL FOR FLOWMETER SENSING HEAD LEVELLING.

00	REV_DES_0
No	DESCRIPTION
REVISIONS	
<b>SIEMENS</b>	
FILE #	DRAWING NUMBER
JOB No.	SHEET 1 OF 1
	REV 00

**CONFIDENTIAL**  
 IMPORTANT NOTICE  
 THIS DOCUMENT REMAINS THE PROPERTY OF SIEMENS AND IS SUBJECT TO RECALL. IT MAY NOT BE COPIED, AND IS ISSUED AND CAN BE UTILIZED ONLY FOR SUCH LIMITED PURPOSES AS MAY SPECIFICALLY HAVE BEEN AUTHORIZED BY SIEMENS. IT IS TO BE MAINTAINED CONFIDENTIAL, SINCE IT MAY CONTAIN PROPRIETARY INFORMATION AND TRADE SECRETS OF SIEMENS OR OTHERS. THE ITEMS DEPICTED MAY THEMSELVES BE THE SUBJECT OF PATENTS, INDUSTRIAL DESIGN REGISTRATIONS OR COPYRIGHTS OF SIEMENS OR OTHERS, AND THE ISSUE OF THIS DRAWING DOES NOT IMPLY ANY LICENSE UNDER ANY SUCH RIGHTS.  
 COPYRIGHT SIEMENS  
 ALL RIGHTS RESERVED

SCALE:	DATE	ALL DIMENSIONS IN MM UNLESS OTHERWISE NOTED TOLERANCES UNLESS OTHERWISE NOTED 0-300 = ±0.30    ANGLE = ±0.5° 300 + = ±0.75	THIRD ANGLE 
DRAWN:			
CHECKED:			
APPROVED:			
TITLE		E-40 SOLIDS FLOWMETER BASE MOUNT ILE-37 (ANSI FLANGES) GENERAL ARRANGEMENT DRAWING	