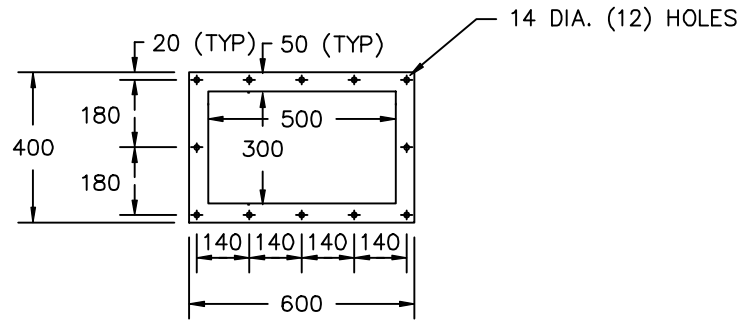
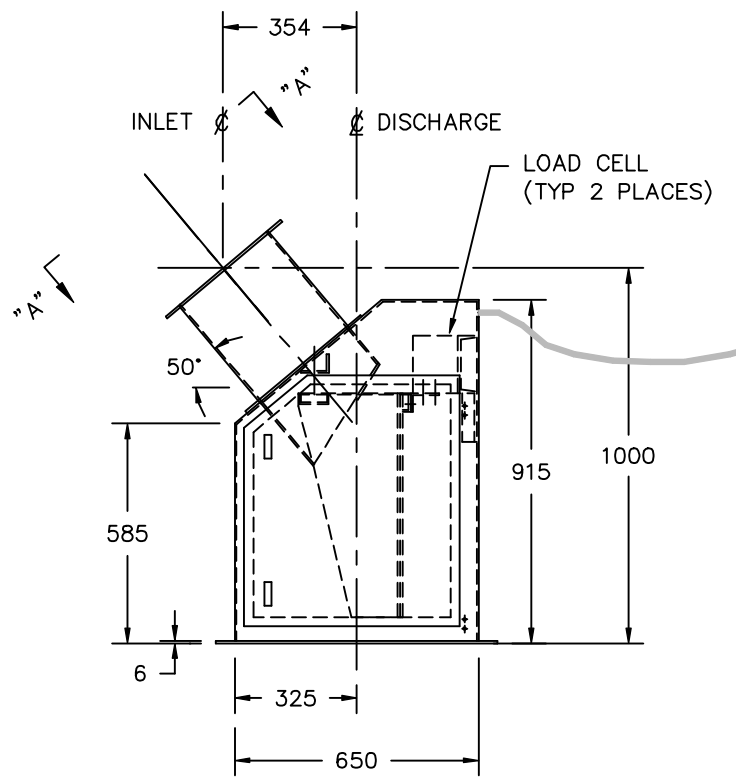
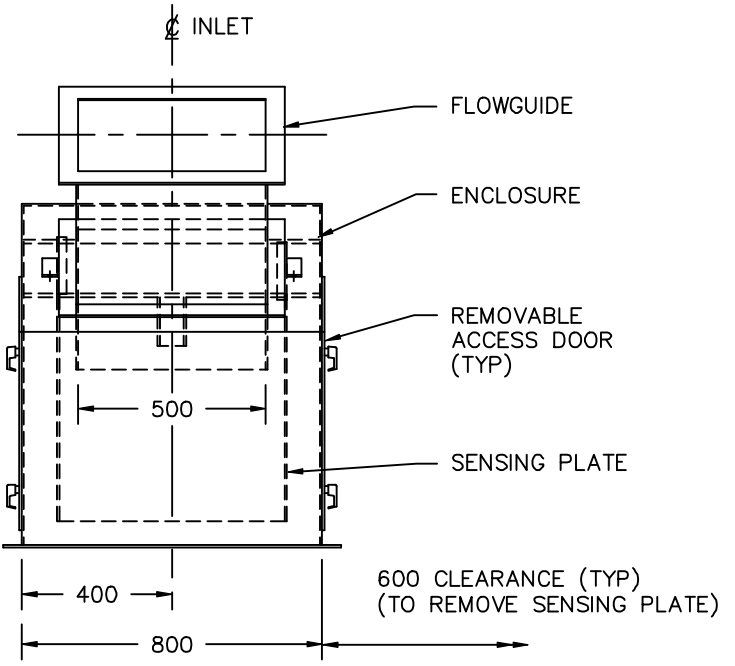


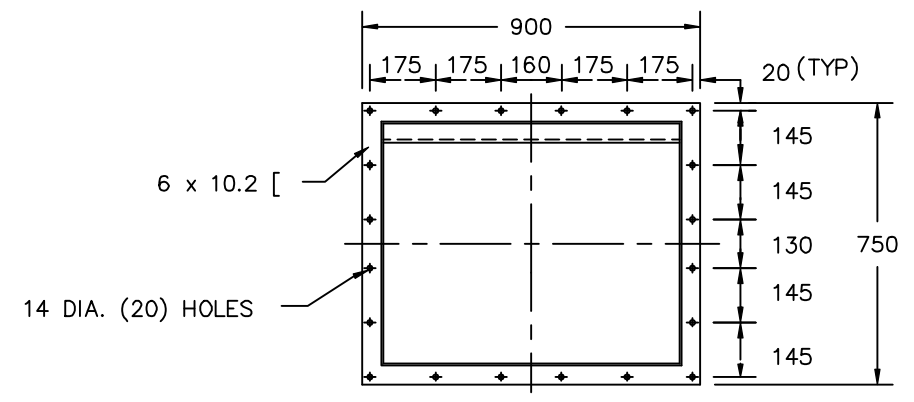
A I B I C I D I E I F I G I H I I I J I



VIEW "A" - "A"



NOTE:
LOADCELL CONNECTION
THROUGH CONDUIT
LOCATED ON CENTRE
OF PANEL.



NOTE:

- 1). MILD STEEL OR STAINLESS STEEL CONSTRUCTION.
- 2). FLOWMETER SHOULD BE RIGIDLY SUPPORTED WITH DISCHARGE FLANGE LEVEL.
- 3). ANY MODIFICATION OR CHANGE SHOULD BE APPROVED BY MILLTRONICS.
- 4). SEE DATA SHEET FOR MATERIAL SPECIFICATIONS.
- 5). ALL DIMENSIONS MILLIMETERS.

1	REV'D PER ECN #94-754-0-0006	BG	RDC	DEC 14/94
0	FOR CONSTRUCTION			AUG. 24/92
NO SYM.	DESCRIPTION	APP.	DATE	

REVISIONS

CONFIDENTIAL
IMPORTANT NOTICE
THIS DOCUMENT REMAINS THE PROPERTY OF MILLTRONICS AND IS SUBJECT TO RECALL. IT MAY NOT BE COPIED, AND IS ISSUED AND CAN BE UTILIZED ONLY FOR SUCH LIMITED PURPOSES AS MAY SPECIFICALLY HAVE BEEN AUTHORIZED BY MILLTRONICS. IT IS TO BE MAINTAINED CONFIDENTIAL, SINCE IT MAY CONTAIN PROPRIETARY INFORMATION AND TRADE SECRETS OF MILLTRONICS OR OTHERS. THE ITEMS DEPICTED MAY THEMSELVES BE THE SUBJECT OF PATENTS, INDUSTRIAL DESIGN REGISTRATIONS OR COPYRIGHTS OF MILLTRONICS OR OTHERS, AND THE ISSUE OF THIS DRAWING DOES NOT IMPLY ANY LICENSE UNDER ANY SUCH RIGHTS.
COPYRIGHT MILLTRONICS
ALL RIGHTS RESERVED

SCALE 1:20	DATE
DRAWN L.W.P.	AUG 24/92
CHECKED R.D.C.	DEC 14/94
APPROVED D. CRICHTON	DEC 14/94

TOLERANCES UNLESS OTHERWISE NOTED	THIRD ANGLE PROJECTION
DIMENSIONS AS A DECIMAL ±0.03" ±0.75 mm	ANGLE ± 0.5°
TITLE L-300 (50°) SOLIDS FLOWMETER 300 mm x 500 mm FLOWMETER OUTLINE DIAGRAM	

MILLTRONICS
PETERBOROUGH, ONTARIO, CANADA.

FILE # 10164001	DRAWING NUMBER	REV
PLOT @ 1=20	1-7510073Z-DU-B	1
JOB No.	SHEET 1 OF 1	

1
2
3
4
5
6
7
8
9
10