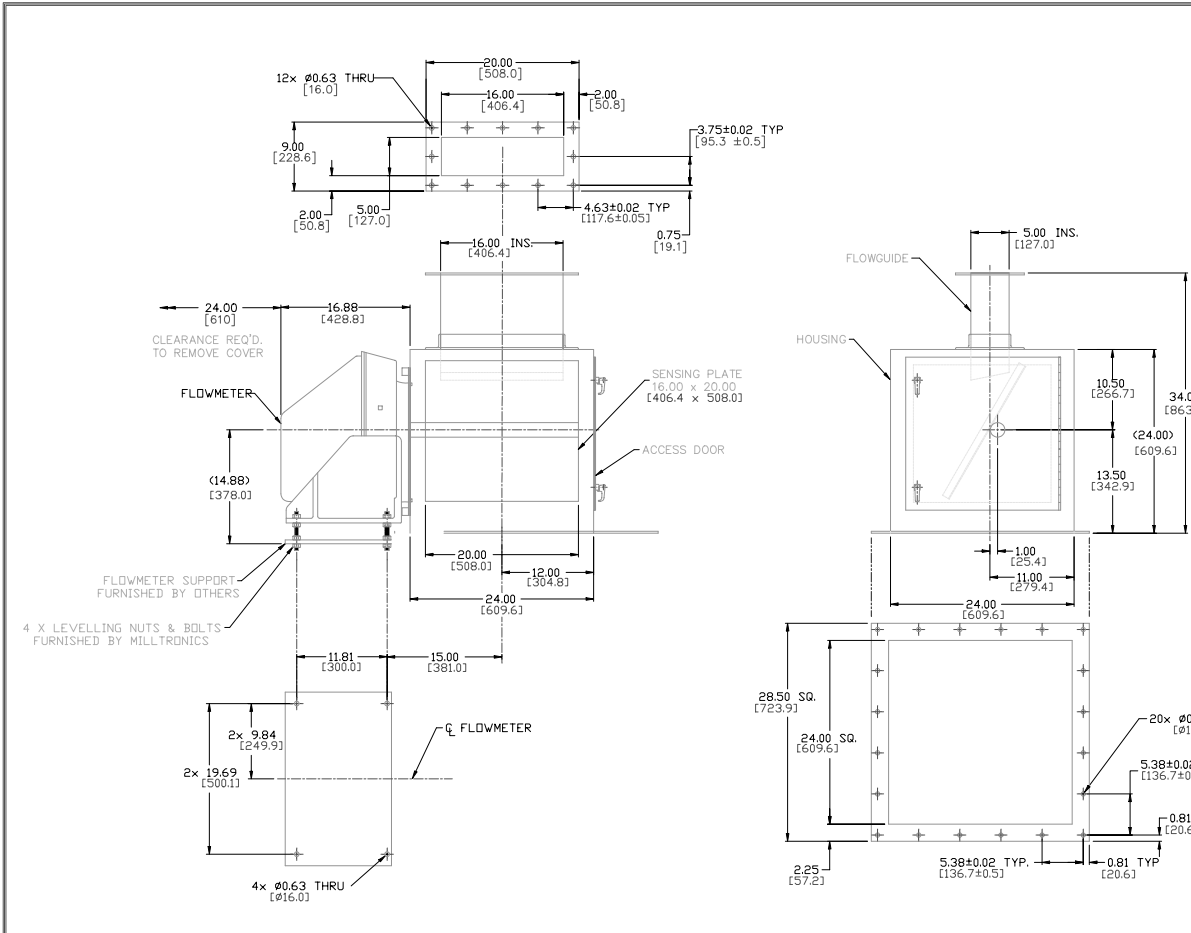


A I B I C I D I E I F I G I H I I I J I



SYSTEM SPECIFICATION	
FLOWGUIDE/CABINET:	
SENSING PLATE:	
SENSING HEAD ILE 61:	
CAL WEIGHT PART No:	
ENGINEERED BY:	

- NOTES:
1. ALL DIMENSIONS IN INCHES
[] DIMENSIONS IN MILLIMETERS
 2. MAT'L: H.R. STEEL, PAINTED SURFACE
 3. FLOWMETER SUPPORT SHOULD BE RIGID AND INDEPENDENT OF ENCLOSURE.
 4. ANY MODIFICATION OR CHANGE SHOULD BE APPROVED BY MILLTRONICS.
 5. SEE DATA SHEET FOR MATERIAL SPECIFICATIONS.
 6. SEE INSTRUCTION MANUAL FOR LEVELING THE FLOWMETER.

00	FIRST ISSUE	REV_DES_0
No	DESCRIPTION	

CONFIDENTIAL
IMPORTANT NOTICE

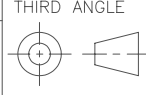
THIS DOCUMENT REMAINS THE PROPERTY OF SIEMENS AND IS SUBJECT TO RECALL. IT MAY NOT BE COPIED, AND IS ISSUED AND CAN BE UTILIZED ONLY FOR SUCH LIMITED PURPOSES AS MAY SPECIFICALLY HAVE BEEN AUTHORIZED BY SIEMENS. IT IS TO BE MAINTAINED CONFIDENTIAL, SINCE IT MAY CONTAIN PROPRIETARY INFORMATION AND TRADE SECRETS OF SIEMENS OR OTHERS. THE ITEMS DEPICTED MAY THEMSELVES BE THE SUBJECT OF PATENTS, INDUSTRIAL DESIGN REGISTRATIONS OR COPYRIGHTS OF SIEMENS OR OTHERS, AND THE ISSUE OF THIS DRAWING DOES NOT IMPLY ANY LICENSE UNDER ANY SUCH RIGHTS.
COPYRIGHT SIEMENS
ALL RIGHTS RESERVED

SCALE:	NTS	DATE	
DRAWN:			
CHECKED:			
APPROVED:			

ALL DIMENSIONS IN INCHES UNLESS OTHERWISE NOTED
TOLERANCES UNLESS OTHERWISE NOTED
0-300 = ±0.30
300 + = ±0.75

ANGLE = ±0.5°

TITLE
V-300 SOLIDS FLOWMETER
GENERAL ARRANGEMENT DRAWING



REVISIONS		
SIEMENS		
FILE #	DRAWING NUMBER	REV
JOB No.	SHEET OF	00