

Milltronics M Series solids flowmeters are high capacity flowmeters for various product sizes, densities and fluidities.

Because of a unique sensing mechanism consisting of two load cells and two stainless steel support cables, materials can be guided onto any part on the sensing plate while maintaining constant moments of force. Even with side-to-side variations of flow and changes in depth, accuracy and repeatability remain constant.

Operating with a microprocessor-based integrator, the M Series flowmeters display flow rate, totalized flow and alarms. Outputs are 0/4–20mA proportional to rate, and contact closure for remote totalization.

Dry bulk solids enter the flow guide producing a mechanical deflection as they strike the flowmeter sensing plate before continuing through the process unhindered. The load cells convert the horizontal force of the deflection into an electrical signal. The integrator processes this into a display of flow rate and integrated total weight. The process is immune to the effect of product build-up as only the horizontal force is measured.



Product Features

- High capacity continuous weighing
- Unique parallelogram force sensing mechanism
- Strain gauge load cell force conversion
- Dust tight enclosure
- Load cells external to process
- Process temperature to 150 °C (300 °F)
- Replaceable sensing plate surface

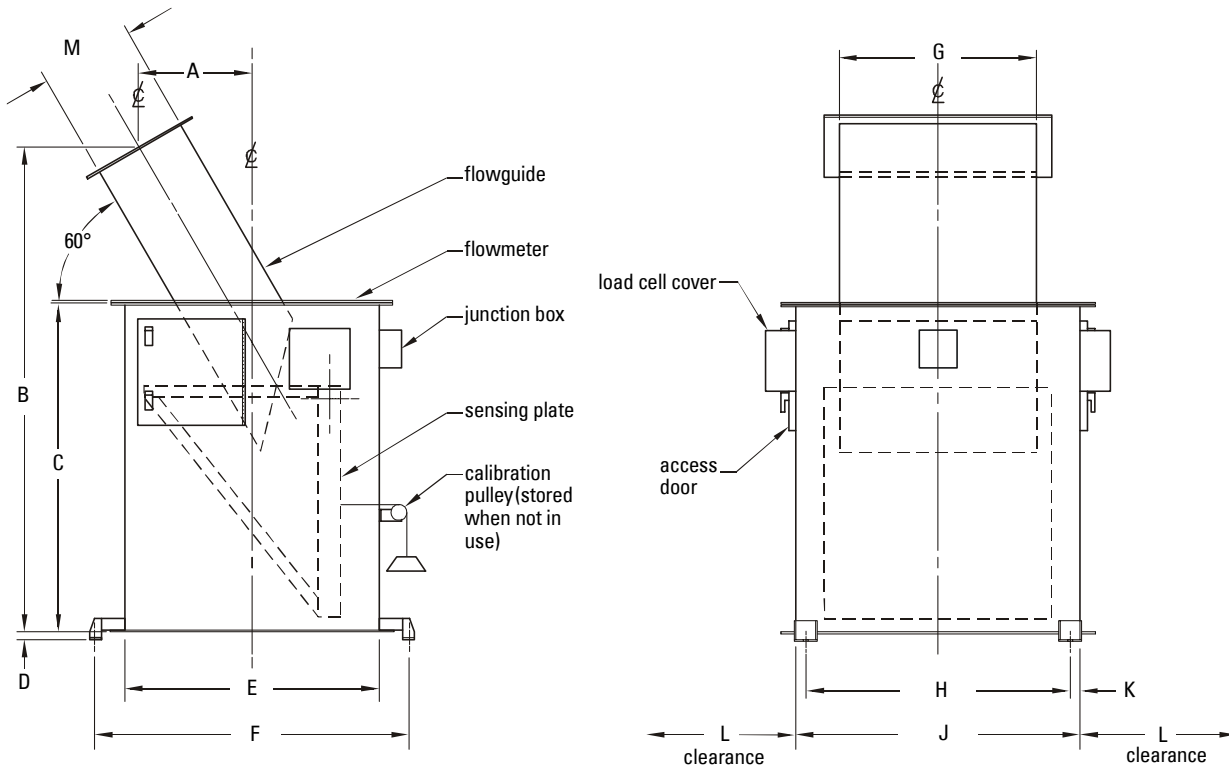
Technical Specifications

Specifications	M-500	M-900
Maximum flow range	0-500 t/h (0-550 STPH)	0-900 t/h (0-990 STPH)
Minimum flow range	0-200 t/h (0-220 STPH)	0-400 t/h (0-440 STPH)
Volumetric capacity	450 m ³ /h (16000 ft ³ /hr)	820 m ³ /h (29000 ft ³ /hr)
Maximum particle size	25 mm (1")	25 mm (1")
Maximum product temperature	150 °C (300 °F)	150 °C (300 °F)
Construction	Painted mild steel with stainless steel sensing plate (sensing plate wear liners are optional)	
Repeatability	± 0.2 %	± 0.2 %
Accuracy	± 1 % of full scale	± 1 % of full scale
Application	Chutes and mechanical conveyors	Chutes and mechanical conveyors
Load Cells		
• Construction	Stainless steel parallelogram	Stainless steel parallelogram
• Excitation	10 V DC	10 V DC
• Output	2 mV/V nominal	2 mV/V nominal
• Operating range	-40 to 65 °C (-40 to 150 °F)	-40 to 65 °C (-40 to 150 °F)
Integrator	Milltronics SF 500	Milltronics SF 500
Hazardous	with use of suitable intrinsically safe barriers	with use of suitable intrinsically safe barriers
Approvals	CE	CE

Specifications are subject to change without notice.

Milltronics M Series

Dimensions



Model	A	B	C	D	E	F	G	H	J	K	L	M
M-500	304 mm (12")	1500 mm (59")	1102 mm (43.38")	25 mm (1")	850 mm (33.5")	1054 mm (41.5")	533 mm (21")	734 mm (28.88")	800 mm (31.5")	38 mm (1.5")	406 mm (16")	305 mm (12")
M-900	381 mm (15")	1626 mm (64")	1102 mm (43.38")	25 mm (1")	850 mm (33.5")	1054 mm (41.5")	660 mm (26")	886 mm (34.88")	953 mm (37.5")	38 mm (1.5")	406 mm (16")	305 mm (12")