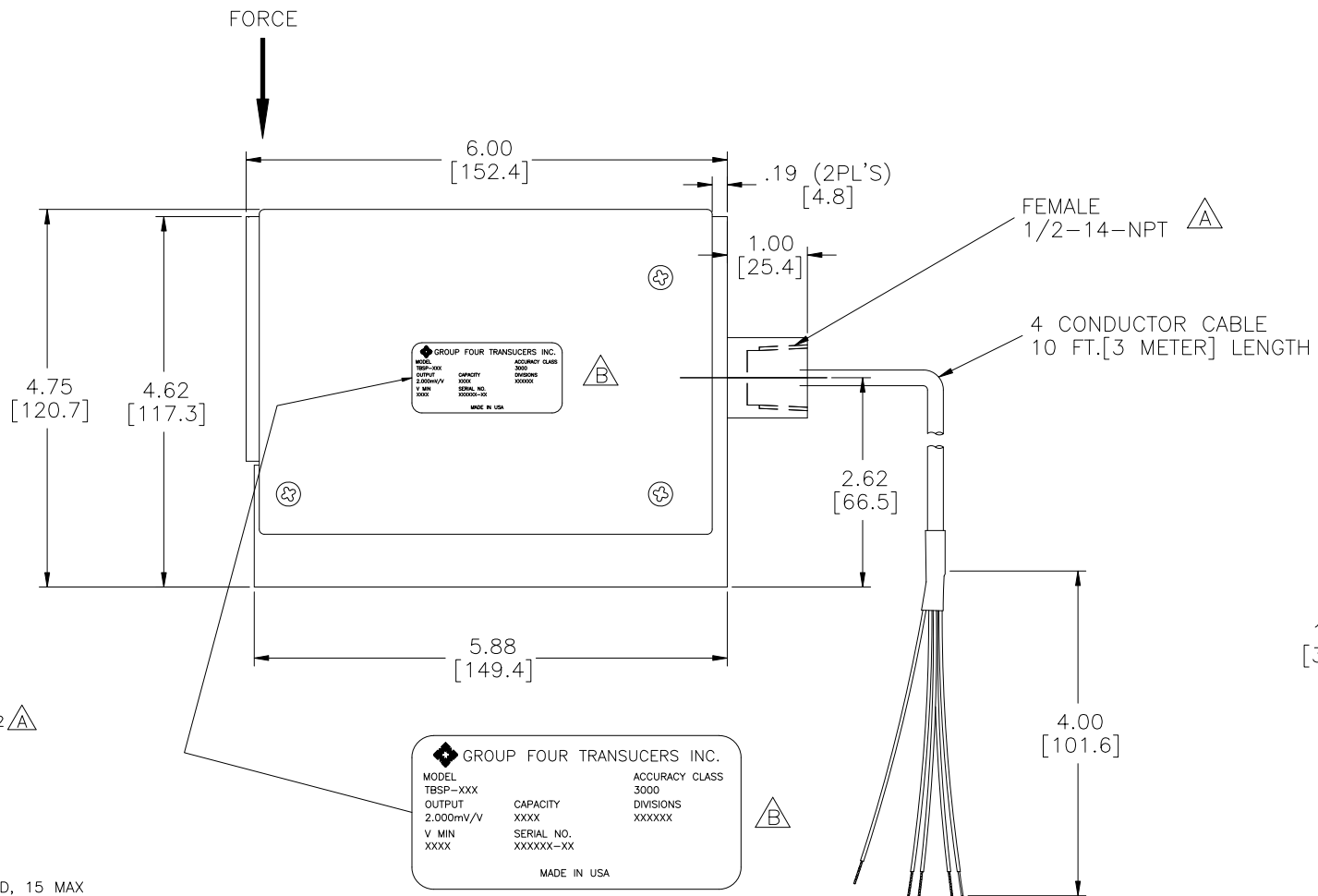
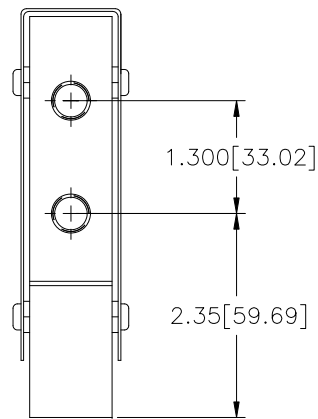




UNCONTROLLED



MODEL: G4-TBSPXXX-M
METRIC THREAD DESIGN

CAPACITIES

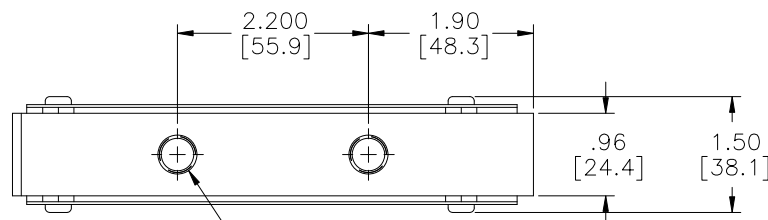
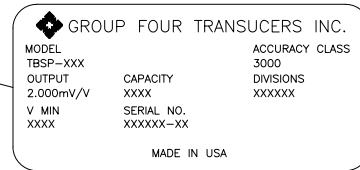
STANDARD	METRIC
50 LB	= 22.5 Kg
100 LB	= 45 Kg
250 LB	= 110 Kg
500 LB	= 230 Kg
750 LB	= 340 Kg
1000 LB	= 454 Kg

DIMENSIONS

INCHES	MM
X.XX	[XX.X]

SPECIFICATIONS
 RATED OUTPUT (mV/V)
 ACCURACY CLASS ACCORDING TO OIML R 60
 MAXIMUM NUMBER OF VERIFICATION INTERVALS (n)
 MINIMUM LOAD CELL VERIFICATION INTERVAL (vmin)
 COMBINED ERROR (%RO)
 REPEATABILITY (%RO)
 CREEP ERROR IN 30 MIN (%RO)
 TEMPERATURE EFFECT
 ON MINIMUM DEAD LOAD OUTPUT (%RO/°C)
 SENSITIVITY (%load/°C)
 EXCITATION VOLTAGE (V)
 ZERO BALANCE (%RO)
 INPUT RESISTANCE (ohms)
 OUTPUT RESISTANCE (ohms)
 INSULATION RESISTANCE (Mohms)
 TEMPERATURE RANGE:
 COMPENSATED (°C)
 OPERATING (°C)
 SAFE LOAD LIMIT (%E_{max})
 ULTIMATE LOAD (%E_{max})
 SAFE SIDE LOAD (%E_{max})
 LOAD CELL MATERIAL
 SEALING
 PROTECTION ACCORDING TO DIN 40.050
 OCLS ADJUSTMENT (mV/V)

2.000 TO 2.002 Δ
 C3
 3000
 E_{max}/11500
 < ± 0.020
 < ± 0.01 Δ
 < ± 0.024
 < ± 0.0011
 < ± 0.0011
 10 RECOMMENDED, 15 MAX
 < ± 1.0
 450 ± 100
 350 ± 5
 > 5000
 -10 TO +40
 -40 TO +85 Δ
 200
 300
 100
 17-4 pH STAINLESS STEEL
 ENVIRONMENTALLY SEALED
 IP67
 <0.0010 MAX, 25lb AT 3in Δ



M12 x 1.75 (4PL'S)
16mm MAXIMUM BOLT DEPTH
TORQUE: 165 N•m
CLASS 12.9 BOLTS

NOTES:

- 1. PARAMETERS: NON-LINEARITY, HYSTERESIS, AND TEMPERATURE EFFECT ON SPAN ARE ADJUSTED TO FIT WITHIN THE OIML CLASS C, 3000 DIVISION, MULTIPLE ERROR BAND AND NTEP CLASS III, 3000 DIVISION, MULTIPLE ERROR BAND.
- 2. 50 lb CAPACITY HAS NOT BEEN APPROVED BY NTEP OR OIML.



THIS PRINT IS FURNISHED WITH THE UNDERSTANDING THAT THE ESSENCE THEREOF WILL NOT BE REPRODUCED IN WHOLE OR IN PART WITHOUT WRITTEN AUTHORIZATION OF GROUP FOUR TRANSDUCERS INC. ALL DESIGNS ARE THE PROPERTY OF GROUP FOUR TRANSDUCERS INC. AND WILL BE PROTECTED BY PATENTS.

NAME: G4-TBSP-M-NTEP/OIML
 DRN MSL ENG ELH
 CHK'D ELH APP'D ELH
 DWG NO. 200294 NTEP/OIML

MATERIAL SPEC.	G-4 CODE
FINISH DESCRIPTION	FINISH CODE
DIMENSION TOLERANCES UNLESS SPECIFIED	
DECIMALS .XX ±0.02 .XXX ±0.005	ANGULAR ±1/8"
SCALE NOT TO SCALE	
PROJ. NO./SPEC. NO. C:\DRAWINGS\1PBN\TBSP-NTEP\TB-200294	

NO.	ZONE	ECO#	DESCRIPTION	BY	CHK'D	APP'D	DATE
B		1566	CHANGED LABEL TO REFLECT PRESENT USE AND CHANGED REF. "OCLS" TO "OIML".	MSL	MSL	PJK	12/12/06
A		1421	CHANGED OUTPUT (2.0±.1->2.000 TO 2.002), OP TEMP RANGE (-20 TO 65 -> -40 TO 85), ADDED NTEP, OIML & REPEATABILITY	MSL	MSL	PJK	12/12/06
-			DETAILED NTEP/OIML SPECIFICATIONS	MSL	ELH	ELH	12/10/04

RECORD OF CHANGES