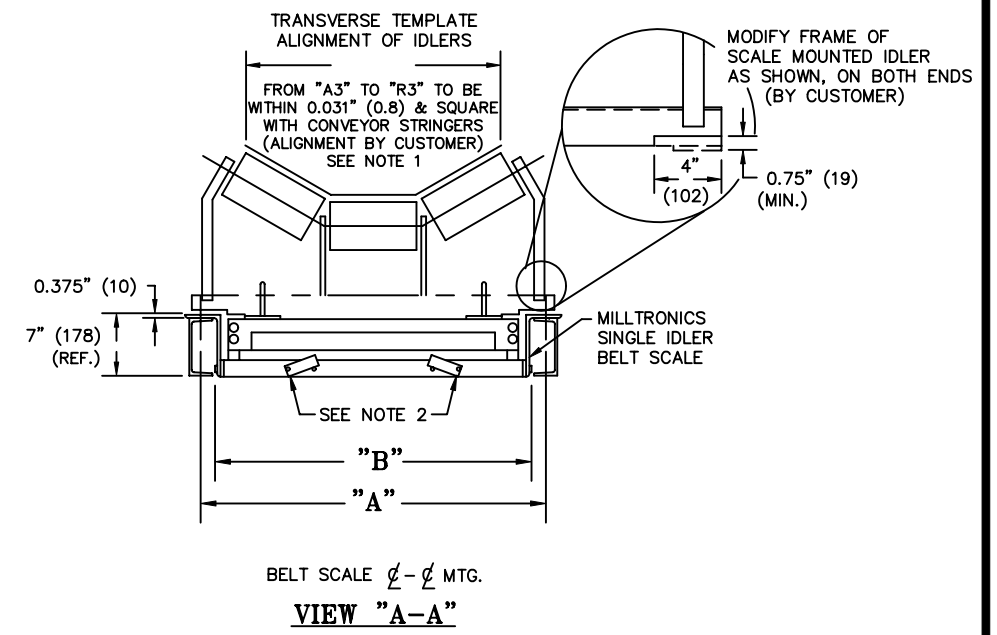
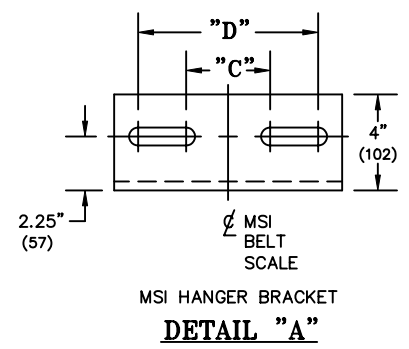


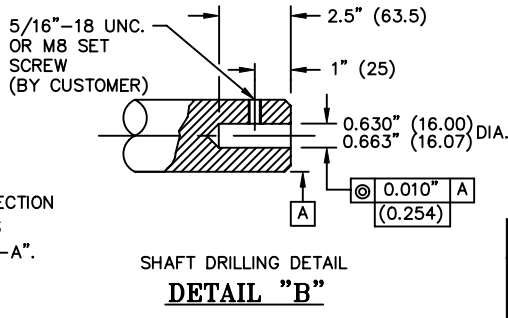
**DIMENSIONS**

BELT WIDTH	"A" DIM	"B" DIM	"C" DIM	"D" DIM
18"	27" (686)	23.3" (592)	3.5" (89)	7.5" (191)
20"	29" (737)	25.3" (642)	3.5" (89)	7.5" (191)
24"	33" (838)	29.3" (744)	3.5" (89)	7.5" (191)
30"	39" (991)	35.3" (896)	3.5" (89)	7.5" (191)
36"	45" (1143)	41.3" (1049)	3.5" (89)	7.5" (191)
42"	51" (1295)	47.3" (1201)	3.5" (89)	7.5" (191)
48"	57" (1448)	53.3" (1353)	3.5" (89)	7.5" (191)
54"	63" (1600)	59.4" (1510)	5" (127)	10" (254)
60"	69" (1753)	65.4" (1662)	5" (127)	10" (254)
66"	75" (1905)	71.5" (1815)	5" (127)	10" (254)
72"	81" (2057)	77.4" (1967)	5" (127)	10" (254)



**NOTE:**

- REFER TO THE MSI INSTRUCTION MANUAL FOR INSTALLATION AND ALIGNMENT INSTRUCTIONS. REFER TO THE APPLICATIONS GUIDELINES FOR PLACEMENT OF THE BELT SCALE. ALL RECOMMENDATIONS FROM BOTH MANUALS MUST BE FOLLOWED TO ENSURE SCALE ACCURACY. FOR FURTHER INFORMATION PLEASE CONTACT YOUR SIEMENS MILLTRONICS REPRESENTATIVE.
- EACH SINGLE IDLER BELT SCALE INCLUDES 2 LOAD CELL ASSEMBLIES. SHIPPING BRACKETS PROVIDE PROTECTION DURING SHIPMENT AND INSTALLATION. AFTER INSTALLATION LOOSEN UPPER BOLTS ON SHIPPING BRACKETS LET BRACKETS SWING CLEAR OF DYNAMIC BEAM AND COME TO REST ON THE LOWER BOLTS, SEE VIEW "A-A". THE BRACKETS SHOULD BE RE-INSTALLED IF THE BELT SCALE IS MOVED. AVOID EXERTING ANY SHOCK ON THE LOAD CELLS. DAMAGE COULD RESULT.
- MSI BELT SCALE AND CONVEYOR SHOULD BE SHELTERED FROM STORM OR DIRECT WIND PRESSURE FOR A MINIMUM DISTANCE OF 30 FT. (9140) BEYOND "A1" AND "R1" IDLER POSITIONS. GUIDE IDLERS MUST NOT BE USED WITHIN 15 FT. (4570) BEYOND "A1" AND "R1" IDLER POSITIONS.
- CONVEYOR BELT MUST NOT TOUCH ANY PART OF THE BELT SCALE. DECKING IF ANY, MUST BE REMOVED FROM MIDPOINT BETWEEN APPROACH "A1" AND "A2" IDLERS TO MIDPOINT BETWEEN RETREAT "R1" AND "R2" IDLERS.
- SHIM RETURN IDLERS AS REQUIRED TO ENSURE PROPER CLEARANCE OF THE MSI.
- IF WING TYPE SELF CLEANING PULLEYS ARE USED PLEASE CONTACT YOUR SIEMENS MILLTRONICS REPRESENTATIVE.
- ( ) DENOTES DIMENSIONS IN MILLIMETERS, UNLESS OTHERWISE NOTED.



1	ADD SIEMENS TO COMPANY NAME, ADD MILLTRONICS TO PRODUCT NAME PER ECN 2003-0300	RPC	PTR	FEB 27/2004
USE DIMENSIONS ONLY - DO NOT SCALE		REPLACES 0-7250002Z-SI-B REV 0		
DIMENSIONS ARE IN INCHES		Rev.	Revision / ECN Description	Drawn Appr. Date
Third Angle Projection		Product Group	Tolerance Unless Otherwise Noted: UOS	Scale: Size:
<p><b>For Public Release</b></p>		MASS DYNAMICS	1 Place Decimal $\pm$ 0.03	Angles: $\pm$ 0.5°
		Date: 02 JUNE 1998	2 Place Decimal $\pm$ 0.01	3 Place Decimal $\pm$ 0.002
		Drawn: R. CLYSDALE	TITLE: MILLTRONICS MSI BELT SCALE (IMPERIAL) C/W MD-256 SPD SENSOR CUSTOMER INSTALLATION DRAWING	
		Checked: P. RICCI	DRAWING No: 23650495	
		Approved: R.CLOSS	Rev. 1	
Location: PETERBOROUGH		SIEMENS MILLTRONICS PROCESS INSTRUMENTS INC. Peterborough, Ontario, Canada	Plot at: 1=1	
File No. 2365049501	Sheet 1 Of 1			