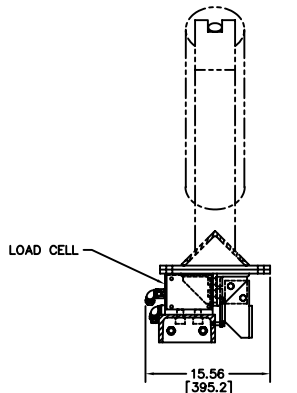
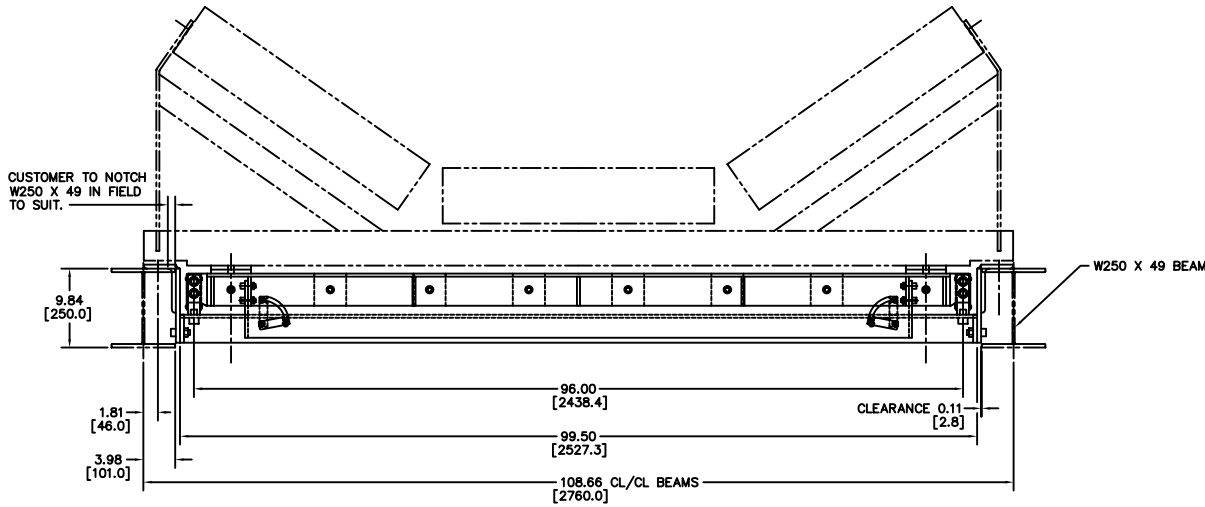
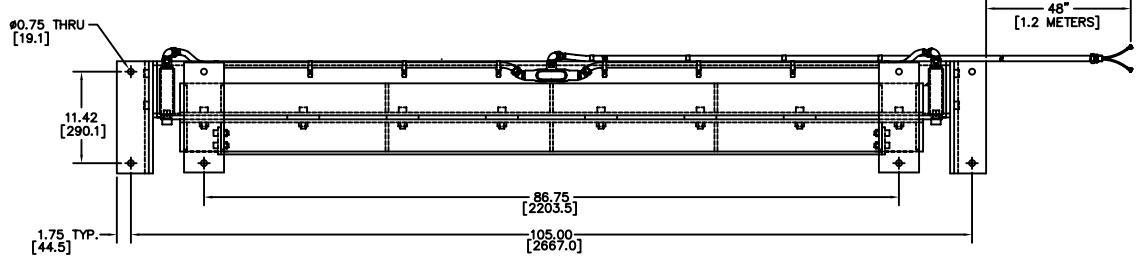


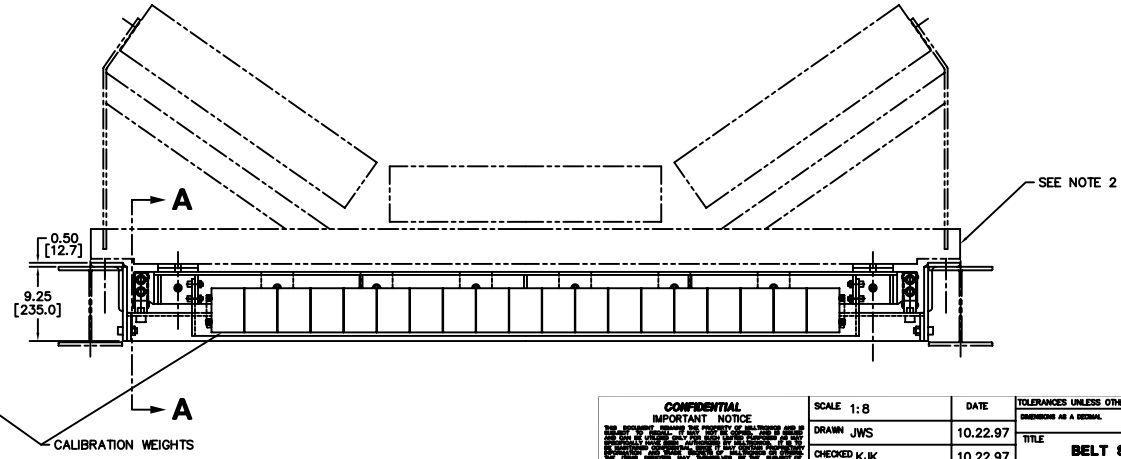
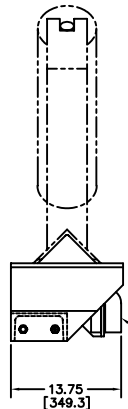
A I B I C I D I E I F I G I H I I I J I K I L I M I N I O I P I Q I R I S I T I U

- NOTES**  
 1. ALL DIMENSIONS IN INCHES  
 [ ] IN MILLIMETERS  
 2. SEE DRAWING# 2-7900452Z-DG-A  
 FOR IDLER MODIFICATION DETAILS.

BELT TRAVEL



**SECTION A-A**



CALIBRATION WEIGHTS

**CONFIDENTIAL**  
 IMPORTANT NOTICE  
 THIS DRAWING IS THE PROPERTY OF MILLTRONICS. IT IS TO BE USED ONLY FOR THE PROJECT AND SITE SPECIFICALLY IDENTIFIED HEREON. IT IS NOT TO BE REPRODUCED, COPIED, OR TRANSMITTED IN ANY FORM OR BY ANY MEANS, ELECTRONIC OR MECHANICAL, INCLUDING PHOTOCOPYING, RECORDING, OR BY ANY INFORMATION STORAGE AND RETRIEVAL SYSTEM, WITHOUT THE WRITTEN PERMISSION OF MILLTRONICS.

SCALE 1:8  
 DRAWN JWS  
 CHECKED KJK  
 APPROVED NRS

DATE  
 10.22.97  
 10.22.97

TOLERANCES UNLESS OTHERWISE NOTED:  
 DIMENSIONS AS A NORMAL  
 ANGLES & R.P.  
 THIRD ANGLE PROJECTION

TITLE  
**BELT SCALE, 2400MM  
 OUTLINE DIMENSIONS  
 BELT SCALE-GLOBAL UNIT**

1	PER ECN# A0005489	KJK	11/19
NO SYM	DESCRIPTION	APP.	DATE

REVISIONS



FILE # 20364501	DRAWING NUMBER	REV
PLOT # 1-8	<b>2-7900427Z-DU-D</b>	1
JOB No. 82696	SHEET 1	OF 1