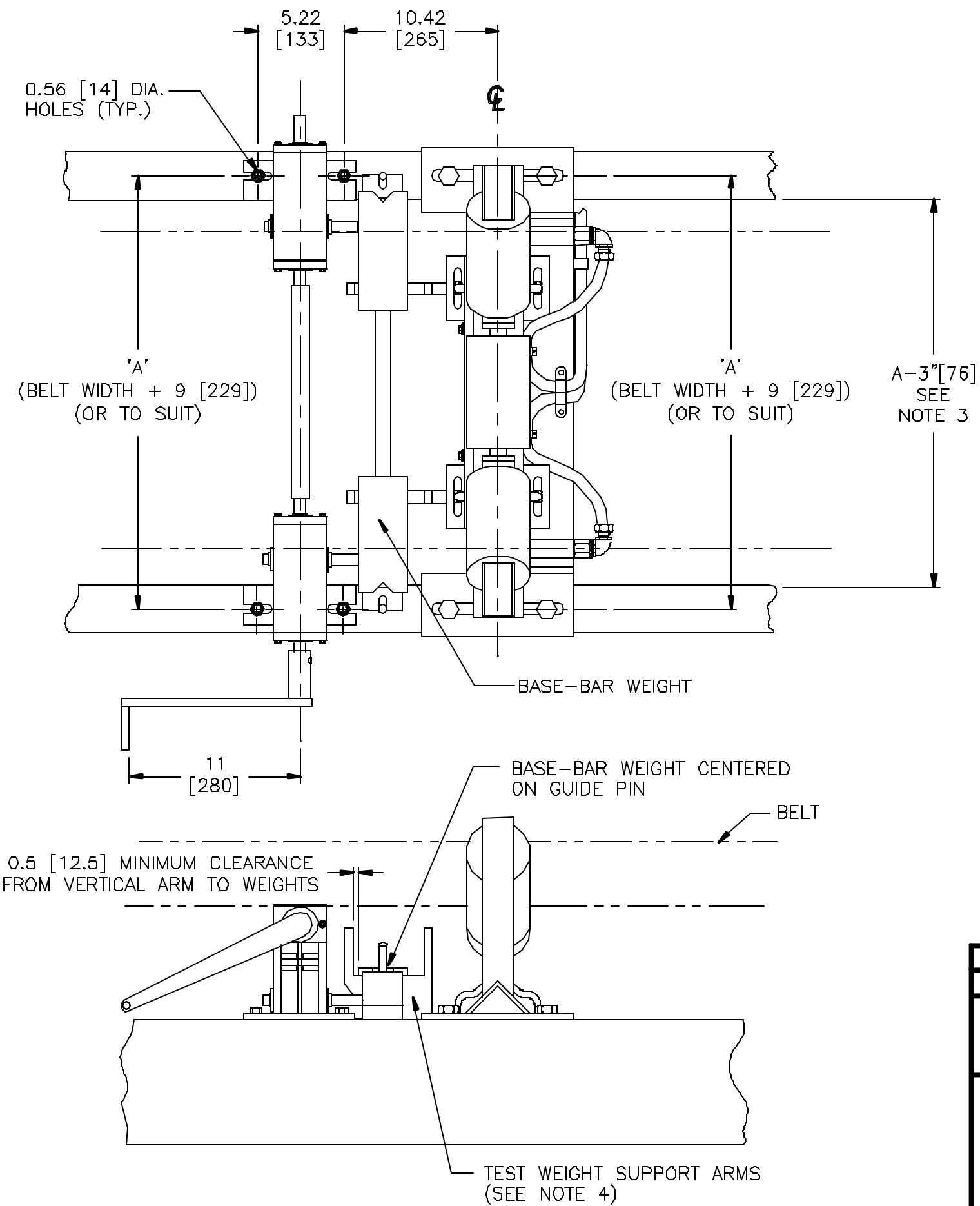


A B C D E F G H I J



- NOTES:
- 1) DIMENSIONS INCHES. [] DENOTES DIMENSIONS IN MILLIMETRES.
 - 2) TO MOUNT CRANK BODIES LOCATE AND DRILL FOUR 0.56" [14 mm] HOLES. BOLT CRANK BODIES LOOSELY FOR ASSEMBLY AND FITTING. SEE INSTRUCTION MANUAL FOR FURTHER DETAILS.
 - 3) THE FLANGE OF THE CONVEYOR STRINGERS MAY HAVE TO BE MODIFIED IN A MWL MOUNTING AREA TO ALLOW IT TO FIT.
 - 4) A PRE-INSTALLED MSI WILL REQUIRE INSTALLATION OF TEST WEIGHT SUPPORT ARMS (SUPPLIED WITH MWL).
 - 5) 'A' DIMENSION IS BELT WIDTH + 9 INCHES (229 mm) WHICH IS BASED ON CEMA STANDARDS. (NON CEMA WIDTHS ARE AVAILABLE)
 - 6) CONTACT YOUR SIEMENS MILLTRONICS REPRESENTATIVE FOR FURTHER INFORMATION.

1	REMOVED JUNCTION BOX - CHANGE CONDUIT LAYOUT	JLC	PTR	JULY 24/03
0	FOR CONSTRUCTION	PRC	RDC	MAY 08/03
Rev.	Revision / ECN Description	Drawn	Appr.	Date
Third Angle Projection 		Product Group MASS DYNAMICS	Tolerance Unless Otherwise Noted: 1 Place Decimal 2 Place Decimal 3 Place Decimal	UOS Angles: NONE
Date: 08/05/03 Drawn: R. CLYSDALE Checked: P. RICCI Approved: R. CLOSS Location: PETERBOROUGH		TITLE: MWL CALIBRATION WEIGHT LIFTER MSI BELT SCALE APPLICATION DRAWING		
SIEMENS MILLTRONICS PROCESS INSTRUMENTS INC. Peterborough, Ontario, Canada		DRAWING No: 23650212	Rev. 1	
File No.	2365021201	Plot at:	1:1	Sheet 1 of 1

FOR INTERNAL USE ONLY

1
2
3
4
5
6
7
8
9
10