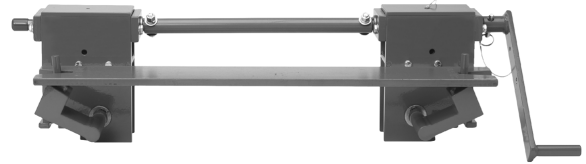


Milltronics MWL weight lifter is a mechanical calibration weight lifter for MSI, MMI, and MUS belt scales. The MWL mechanically raises and lowers the static weights and then stores the weights securely above the belt scale calibration arms, and allows the operator to lower and apply them safely without having to lean into the conveyor. The MWL is manually operated, and utilizes a high mechanical advantage to enable weights up to 225 kg (500 lbs) to be applied with very limited effort. The crank handle uses 4 rotations for full range of motion, and can be removed and stored for safety with the locking ball-pin which secures the MWL when it is not in use.

Two lifting pads support a base-bar weight above the test-weight brackets of the belt scale: either flat bar or horseshoe style calibration weights are applicable. Locating notches in the base-bar weight engage the calibration weights securely on the lifting pads in the stored position, and the worm gear drive locks the lifting pads in place.

Installation is easy, just 4 bolt holes to drill after locating the MWL gear modules (LH and RH) on the conveyor with respect to the belt scale. After running the MWL empty to ensure proper alignment, and then tightening mounting bolts, you are ready for the loading of the test weights. This is the last time that they will have to be lifted by hand.



Product Features

- Safe and easy application of belt scale reference weights with the operator remaining external to the conveyor
- Modular construction, easily adaptable to different conveyor widths
- Low profile allowing easy fit into belt conveyor
- Easy to install and apply
- Easy to store drive handle (can be applied to left or right side of MWL)
- Security pin used to ensure safe storage of weight
- Can be used with new and existing applications

Technical Specifications

Belt Width

- MUS-STD Standard Duty: up to 1000 mm or 42" CEMA width
- MUS-HD Heavy Duty: 1200 mm or 48" CEMA width and up although it can be applied to narrower conveyors
- MSI: 500 to 2000 mm or 18 to 84" CEMA

Idler Spacing

- Minimum of 610 mm (24")

Test Weight Capacity

- MUS-STD: up to 80 kg (175 lbs)
- MUS-HD: up to 160 kg (350 lbs)
- MSI: up to 225 kg (500 lbs)

Crank Arm

- Mechanical advantage: 20:1
- Number of revolutions required for raising or lowering: 4

Construction

- Painted mild steel, with stainless steel optional

Mounting Dimensions

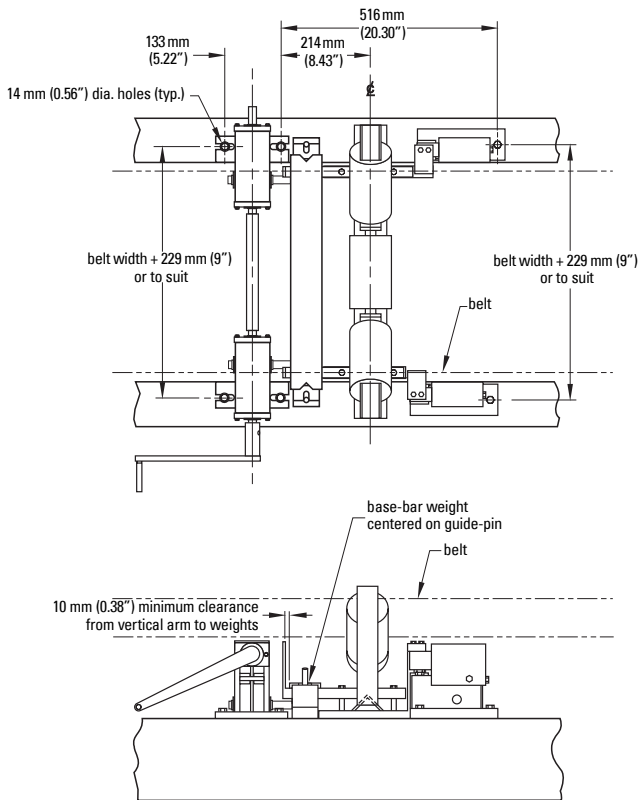
- See reverse for standard and heavy duty MUS and MSI / MMI belt scales

Approvals

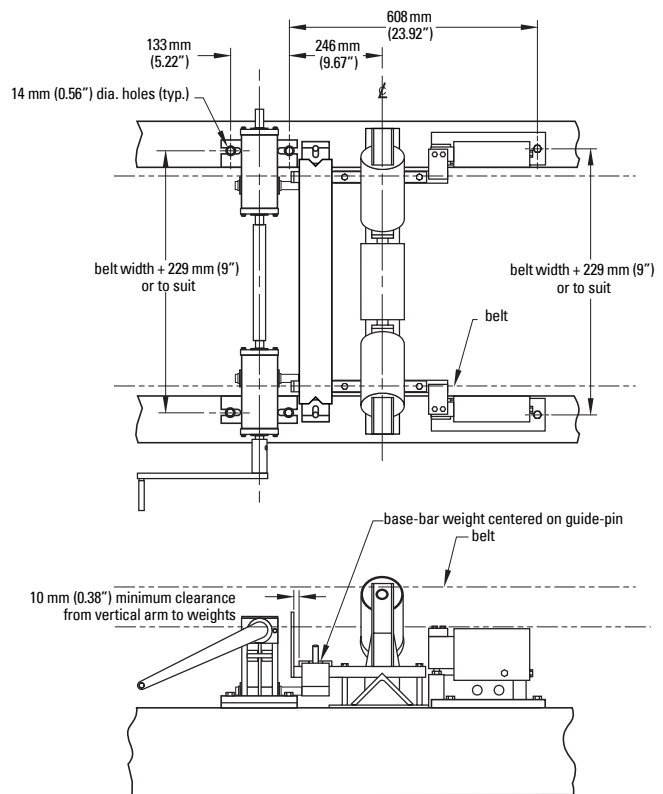
- The MWL is in compliance with Directive 98/37/EC

Dimensions

MWL with MUS – STD Standard Duty Belt Scale



MWL with MUS – HD Heavy Duty Belt Scale



MWL with MSI / MMI Belt Scale

