

The Milltronics TASS speed sensor is a compact, low-profile, wheel driven return belt speed sensor. It operates in conjunction with a conveyor belt scale, providing signals to an integrator which computes the rate of material being conveyed. The trailing arm speed sensor monitors conveyor belt speed, with the output signal transmitted by cable connection to the integrator.

Easily installed close to the belt scale assembly, the TASS provides a signal generated as the wheel rotates on the return belt. Pulses are generated by the internal proximity switch detecting the rotation of the 5 spoked wheel. The TASS is mounted to the static beam of the belt scale or to a structural cross member via a pivoting bracket assembly.

The TASS is most often used on mobile crusher applications where space is limited. The TASS output can be applied to any Siemens Milltronics belt scale integrator.



### Product Features

- Rugged design
- Easy, low cost installation
- Compact, low-profile speed sensor

## Technical Specifications

#### Power

- 10 to 35 Vdc, 15 mA at 24 Vdc maximum

#### Operating Temperature

- -25 to 70 °C (-13 to 158 °F)

#### Input

- bi-directional shaft rotation
- 25 to 350 rpm

#### Output

- magnetic proximity sensor
- open collector, NPN, sinking output, max. 200 mA

#### Pulses

- 5 per revolution
- 9.947 pulses/meter, 3.03 pulses/foot

#### Construction

- trailing arm assembly: painted mild steel

#### Wheel

- 160 mm (6.3") diameter cast aluminum with polyurethane tread

#### Cable

- 2 m, 3 conductor shielded PVC cable, 3 x 0.25 mm<sup>2</sup> (23 AWG), protected with 1000 mm of flexible conduit
- 300 m (1000 ft) maximum cable run

#### Approvals

- CE\*

## Wiring

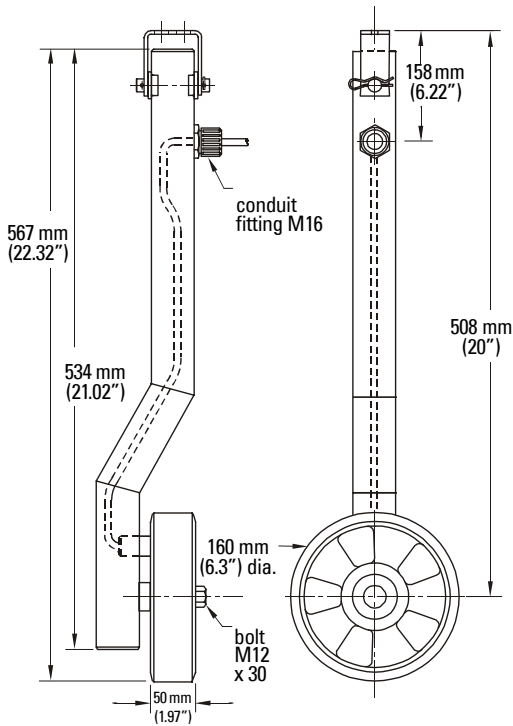
| TASS  | Integrator           |
|-------|----------------------|
| brown | excitation (+15 Vdc) |
| black | signal               |
| blue  | common               |

\* EMC performance available upon request.

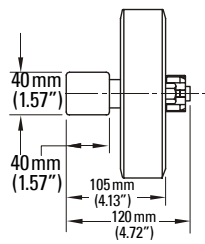
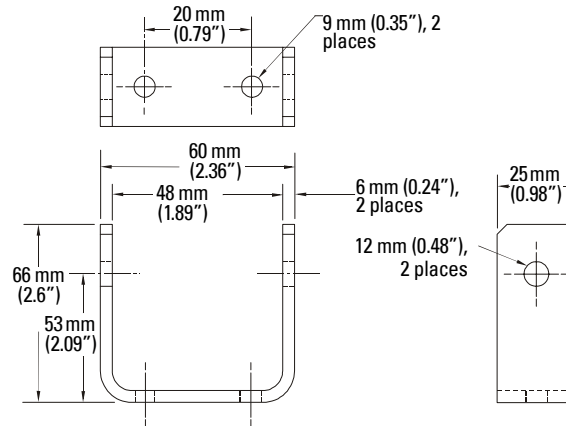
*Specifications are subject to change without notice.*

## Dimensions

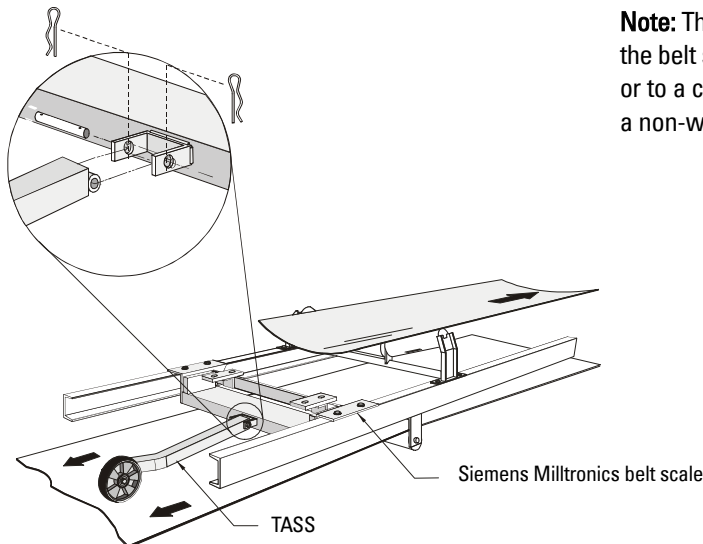
### TASS



### Mounting Bracket



## Mounting



**Note:** The TASS can be mounted to the belt scale static beam as shown, or to a conveyor cross member or to a non-weighing idler frame.